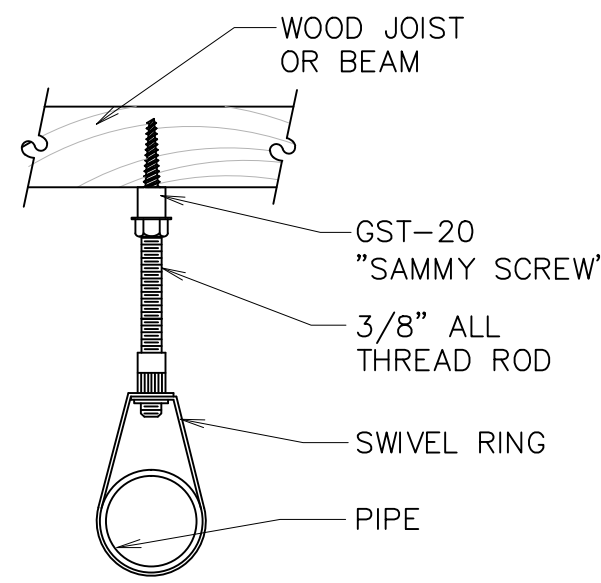
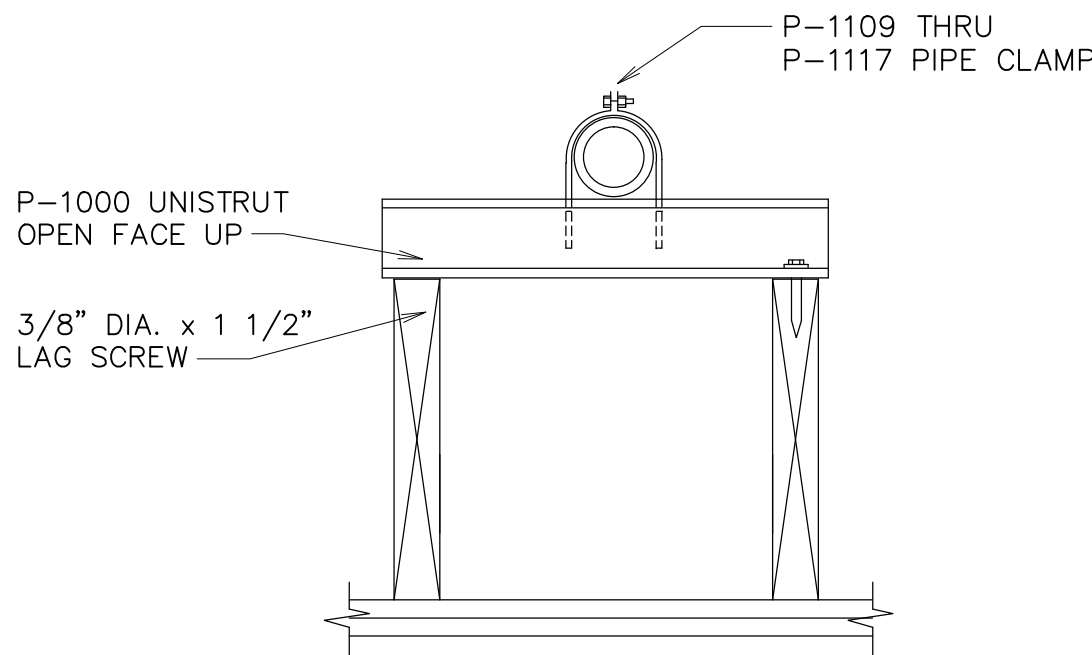


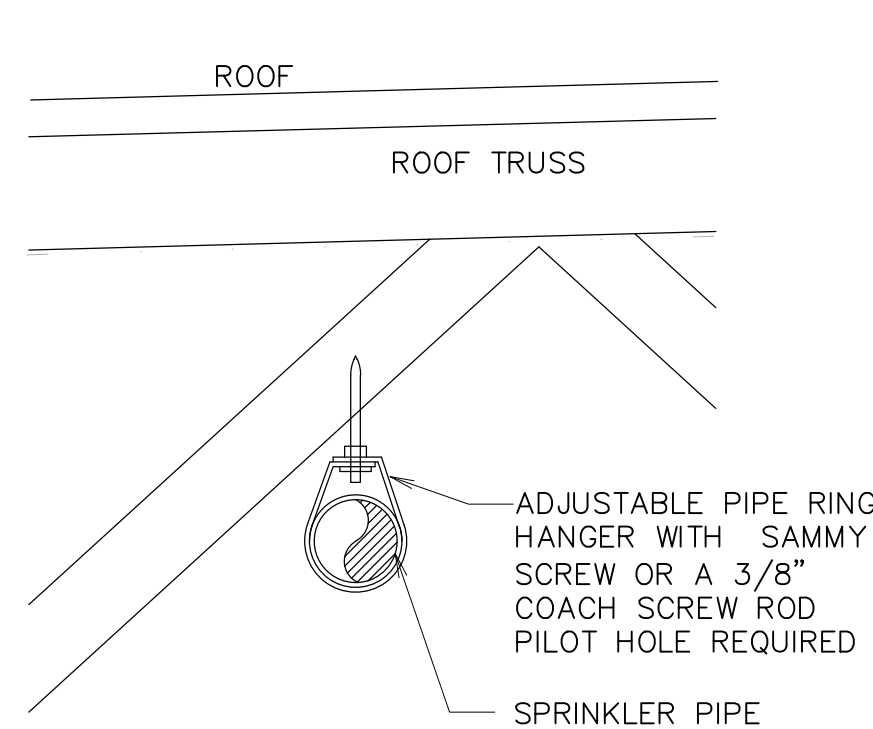
**D** HANGER DETAIL  
NO SCALE



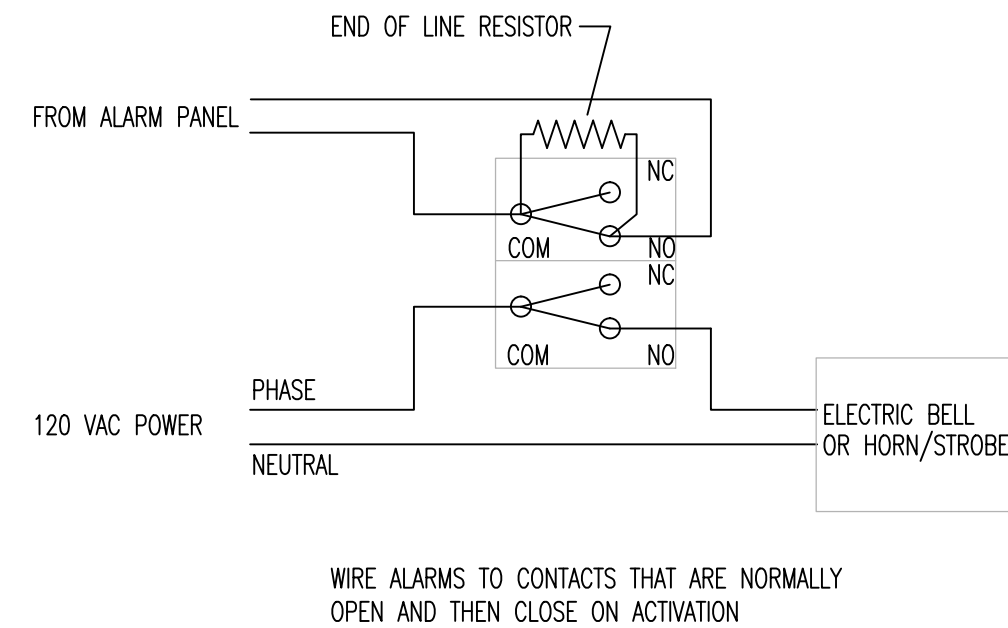
**E** HANGER DETAIL  
NO SCALE



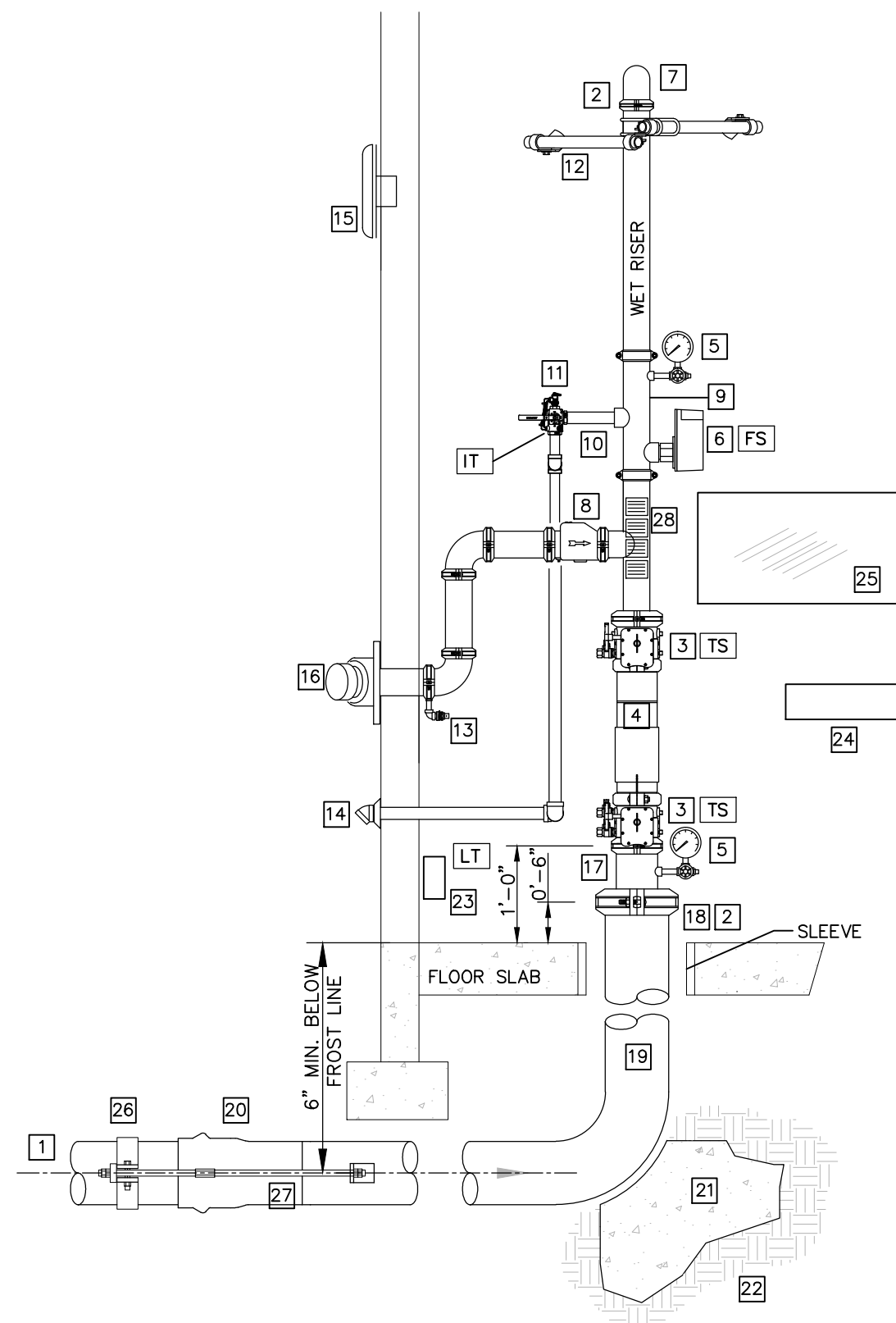
**F** HANGER DETAIL  
NO SCALE



**G** HANGER DETAIL  
NO SCALE



**H** WIRING SCHEMATIC  
NO SCALE



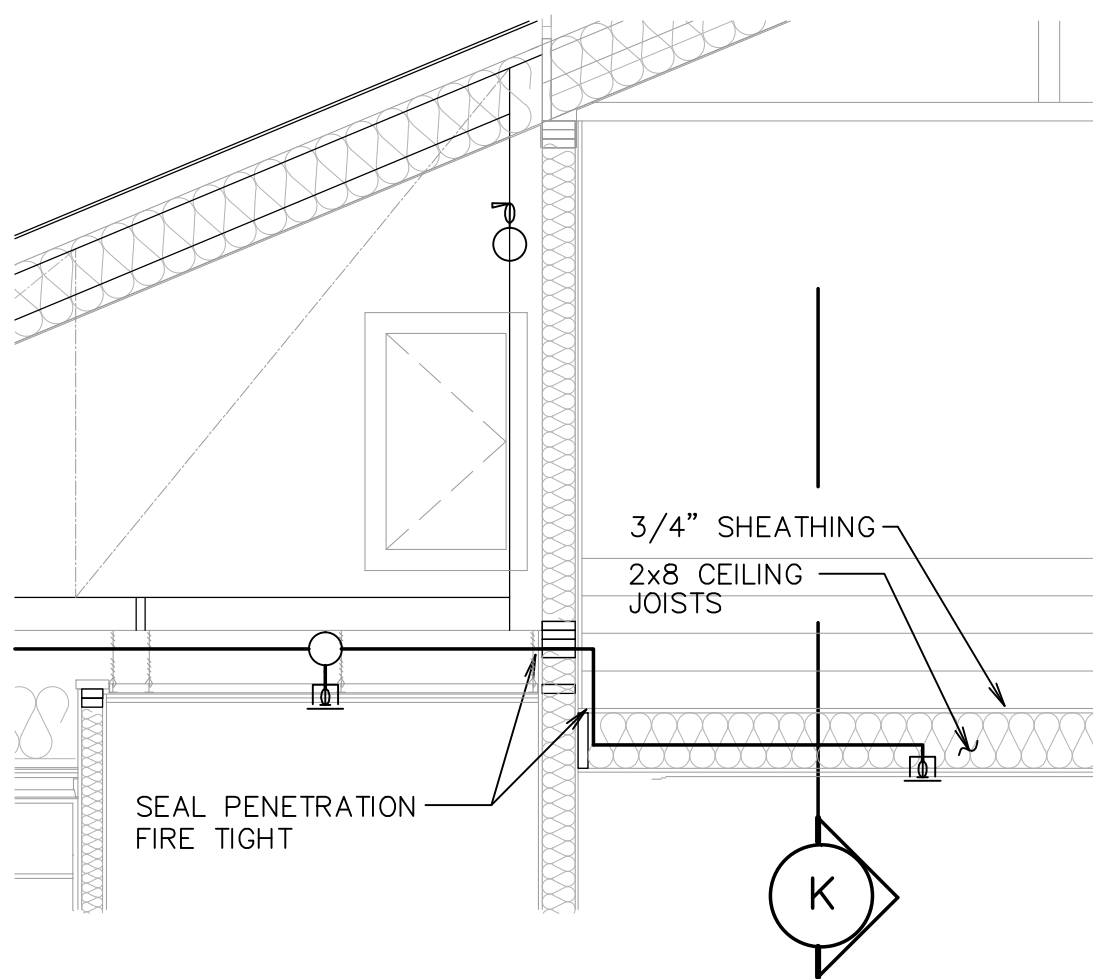
**M** RISER SCHEMATIC  
NO SCALE

WET RISER DETAIL KEYED NOTES:

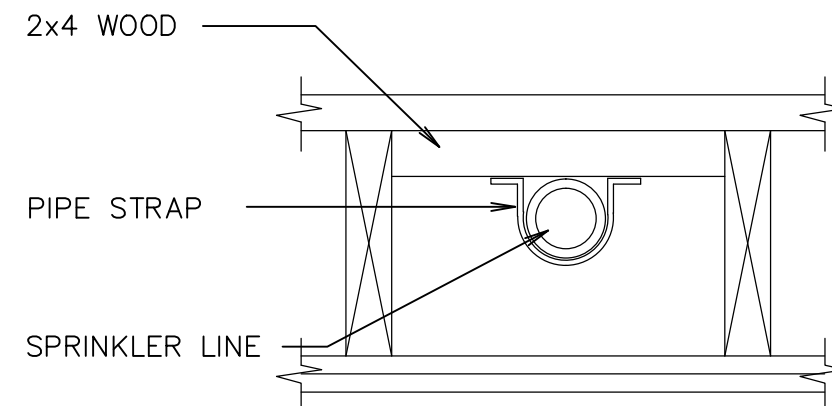
1. WATER SUPPLY FROM CITY WATER MAIN. SEE SITE UTILITY PLAN FOR CONTINUATION.
2. FLEXIBLE GROOVED PIPE COUPLING WHEN SEISMIC BRACING IS REQUIRED. SEE NOTE #12.
3. GROOVED BUTTERFLY VALVE WITH INTEGRAL SUPERVISORY SWITCH.
4. DOUBLE CHECK BACKFLOW PREVENTER WITH RELATED TRIM AND GAUGES.
5. 3/2" DIAMETER WATER GAUGE WITH 1/4" TEST AND ISOLATION VALVE.
6. VANE TYPE WATER FLOW SWITCH.
7. SUPPLY TO WET PIPE FIRE SPRINKLER SYSTEM.
8. SWING CHECK VALVE.
9. RISER MANIFOLD - INCLUDES PRESURE GAUGE, FLOW SWITCH, PRESSURE RELIEF VALVE, AND TEST AND MAIN DRAIN DEVICE.
10. INSPECTOR'S TEST & DRAIN VALVE - PIPE TO OUTSIDE.
11. PRESSURE RELIEF VALVE - REQUIRED - SET AT 175 PSI.
12. SEISMIC BRACING REQUIRED IN SEISMIC DESIGN CATEGORY C, D, E, F. SEE DESIGN CRITERIA SCHEDULE ON SHEET S601.
13. 1/2" AUTOMATIC BALL DRIP VALVE.
14. DRAIN PIPING TO OUTSIDE WITH GALVANIZED PIPE, 45 ELL, AND 1-PCE GALV. COLLAR.
15. WEATHERPROOF ELECTRIC BELL OR HORN AND STROBE (OUTSIDE).
16. OUT TO FIRE DEPARTMENT CONNECTION WITH GALVANIZED SCH 40 PIPING- PROVIDE BALL DRIP WHEN TRAPPING PIPE. SIZE CONNECTION AS REQUIRED.
- 16.1. NOTE: PIPE FDC TO REMOTE LOCATION WHEN REQUIRED BY FIRE MARSHAL.
17. GALVANIZED SPOOL PIECE WITH PRESSURE GAUGE.
18. REDUCING GROOVED COUPLING OR CONCENTRIC GROOVED REDUCER.
19. AMES STAINLESS STEEL "IN-BUILDING-RISER" NO SUBSTITUTIONS, MINIMUM 6 INCH.
20. TYTON JOINT PIPE CONNECTION WITH GASKET.
21. CONCRETE THRUST BLOCK WITH 8 SQ. FEET HORIZONTAL BEARING AREA (MIN).
22. UNDISTURBED EARTH.
23. LOW TEMPERATURE SENSOR - MOUNTED ON WALL - THIS SENSOR IS PROVIDED UNDER DIVISION 28 OF THE SPECIFICATIONS.
24. SPARE HEAD CABINET WITH SPARE SPRINKLER HEADS AND WRENCHES.
25. LAMINATED SYSTEM MAP WITH SYSTEM START-UP AND SHUT-DOWN INSTRUCTIONS.
26. GALVANIZED STEEL PIPE RETAINER CLAMP.
27. GALVANIZED STEEL RODS, SIZE PER NFPA 24, TO INCLUDE WASHERS, ROD COUPLINGS, AND ALL-THREAD RODS WITH DOUBLE HEX NUTS.
28. HYDRAULIC CALCULATION PLACARDS.

GENERAL NOTES:

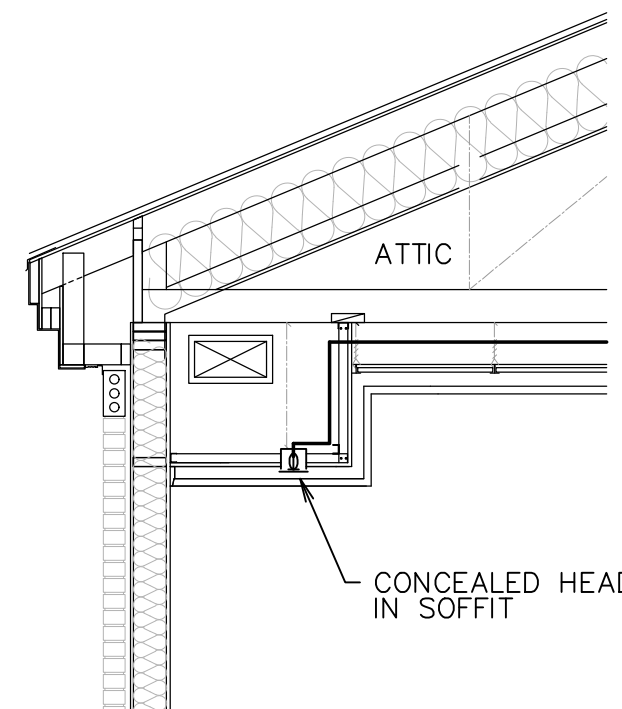
1. PROVIDE SLEEVES WHERE PIPING PENETRATES BUILDING AT FLOOR AND WALLS. SEAL AROUND PENETRATION WITH FLEXIBLE MASTIC AT FLOOR. PROVIDE 2" ANNULAR SPACE AROUND PIPE.
2. ALL BURIED STEEL COMPONENTS SHALL BE PROTECTED FROM CORROSION BY THE TAR AND WRAPPED METHOD. GALVANIZED COMPONENTS ARE NOT EXEMPT FROM THIS REQUIREMENT.



**J** SECTION  
NO SCALE

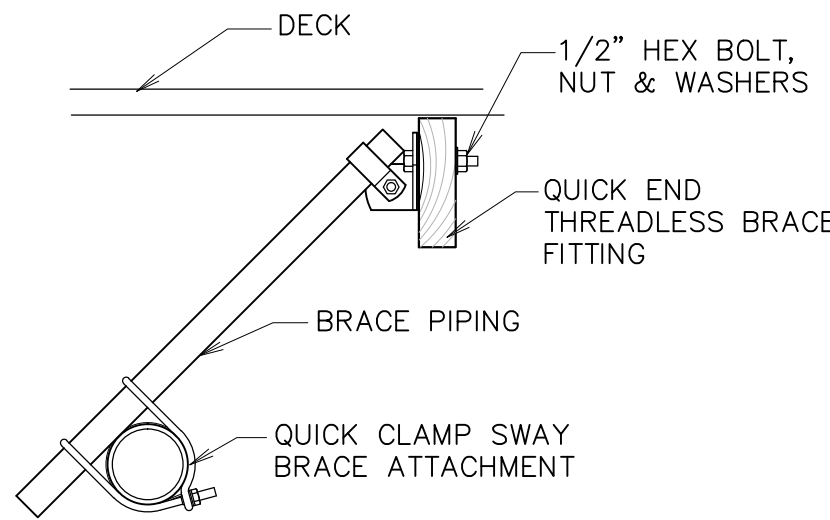


**K** SECTION  
NO SCALE

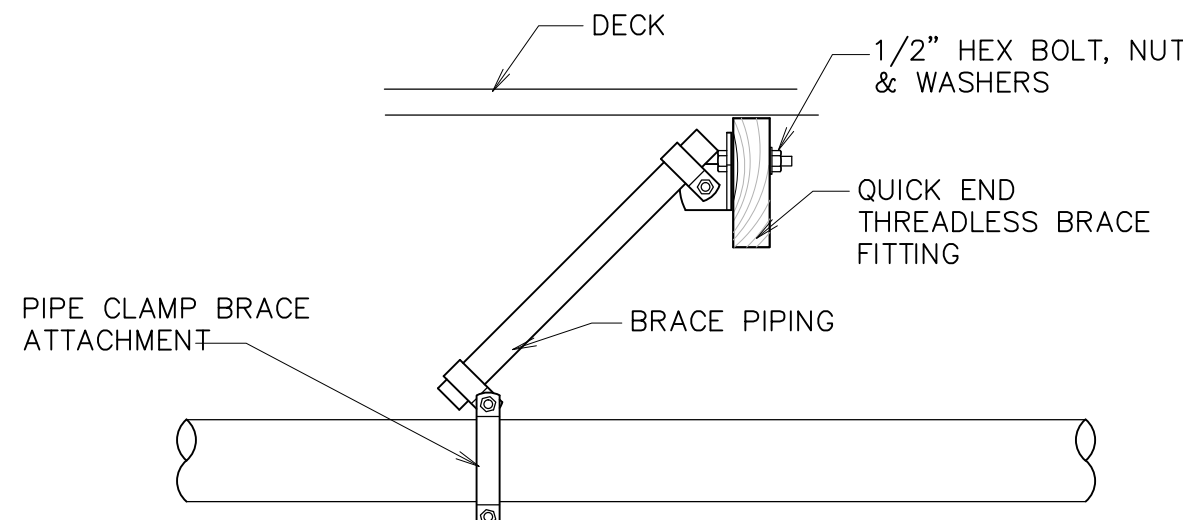


**L** SECTION  
NO SCALE

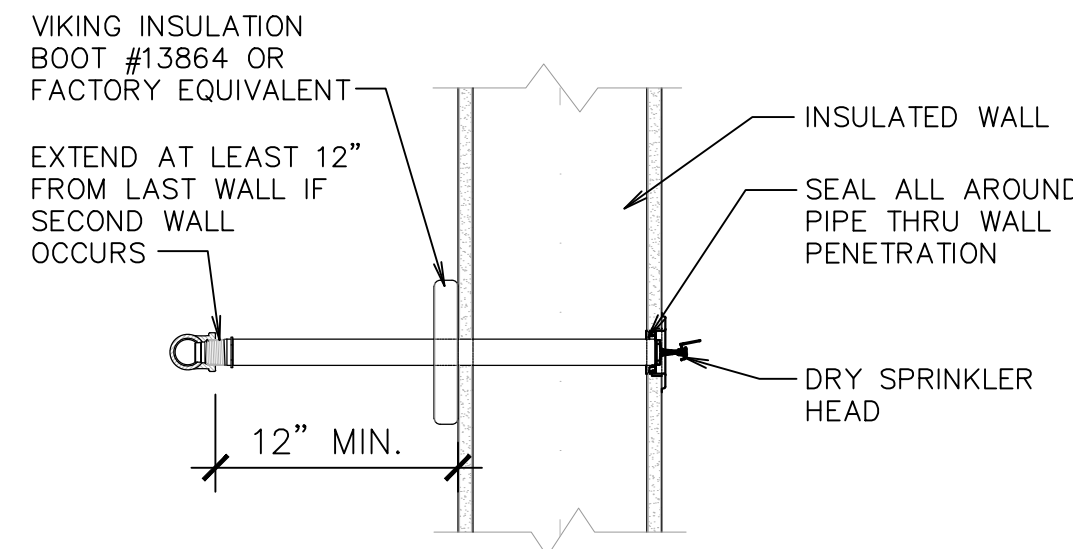
NOTE:  
PROVIDE SEISMIC BRACING ONLY IN SEISMICALLY ACTIVE AREAS. BRACING SHALL CONFORM TO THE REQUIREMENTS OF NFPA 13 AND ALL STATE AND LOCAL CODES.



**N** LATERAL SEISMIC BRACE  
NO SCALE

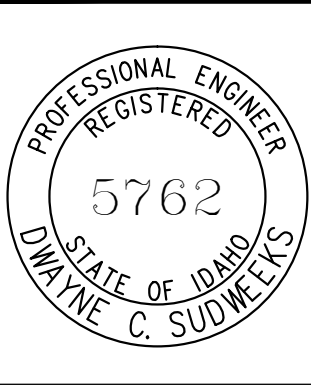


**O** LONGITUDINAL SEISMIC BRACE  
NO SCALE



**P** DRY HEAD DETAIL  
NO SCALE

ORIGINAL DRAWING SIGNED BY: DWAYNE C. SUDWEEKS  
DATE ORIGINAL SIGNED: Nov 29, 2017  
ORIGINAL ON FILE AT ENGINEERED SYSTEMS ASSOCIATES  
1355 EAST CENTER, POCATELLO, IDAHO 83201



**Engineered Systems Associates**  
1355 EAST CENTER  
POCATELLO, IDAHO 83201  
PHONE: (208) 233-0501  
FAX: (208) 233-0529  
EMAIL: esa@engsystems.com  
ESA JOB NUMBER: 17011

Architect / Engineer:  
**nbw architects p.a.**  
ARCHITECTURE / PLANNING / INTERIORS  
SCOTT NELSON, AIA, KEVIN R. BODDY, AIA, JAMES H. WYATT, AIA  
900 JOHN BURNS PARKWAY, P.O. BOX 2272, IDAHO FALLS, IDAHO 83402-2272  
(208) 322-8779 (208) 322-8795 (ID) www.nbwarchitects.com

Stamp:

New Building for:  
**Thunder Ridge Sr. Seminary**  
**S&I**  
Project Address

Project for:  
**THE CHURCH OF JESUS CHRIST OF LATTER-DAY SAINTS**

| Mark | Date (y-m-d) | Description |
|------|--------------|-------------|
|      |              |             |
|      |              |             |
|      |              |             |
|      |              |             |
|      |              |             |
|      |              |             |
|      |              |             |
|      |              |             |
|      |              |             |

Project Number:  
**16059**  
Plan Series:  
**SEM07-04-10**  
Property Number:  
**\*\*\***

Sheet Title:  
**FIRE SPRINKLER DETAILS**

Sheet:

**FS501**